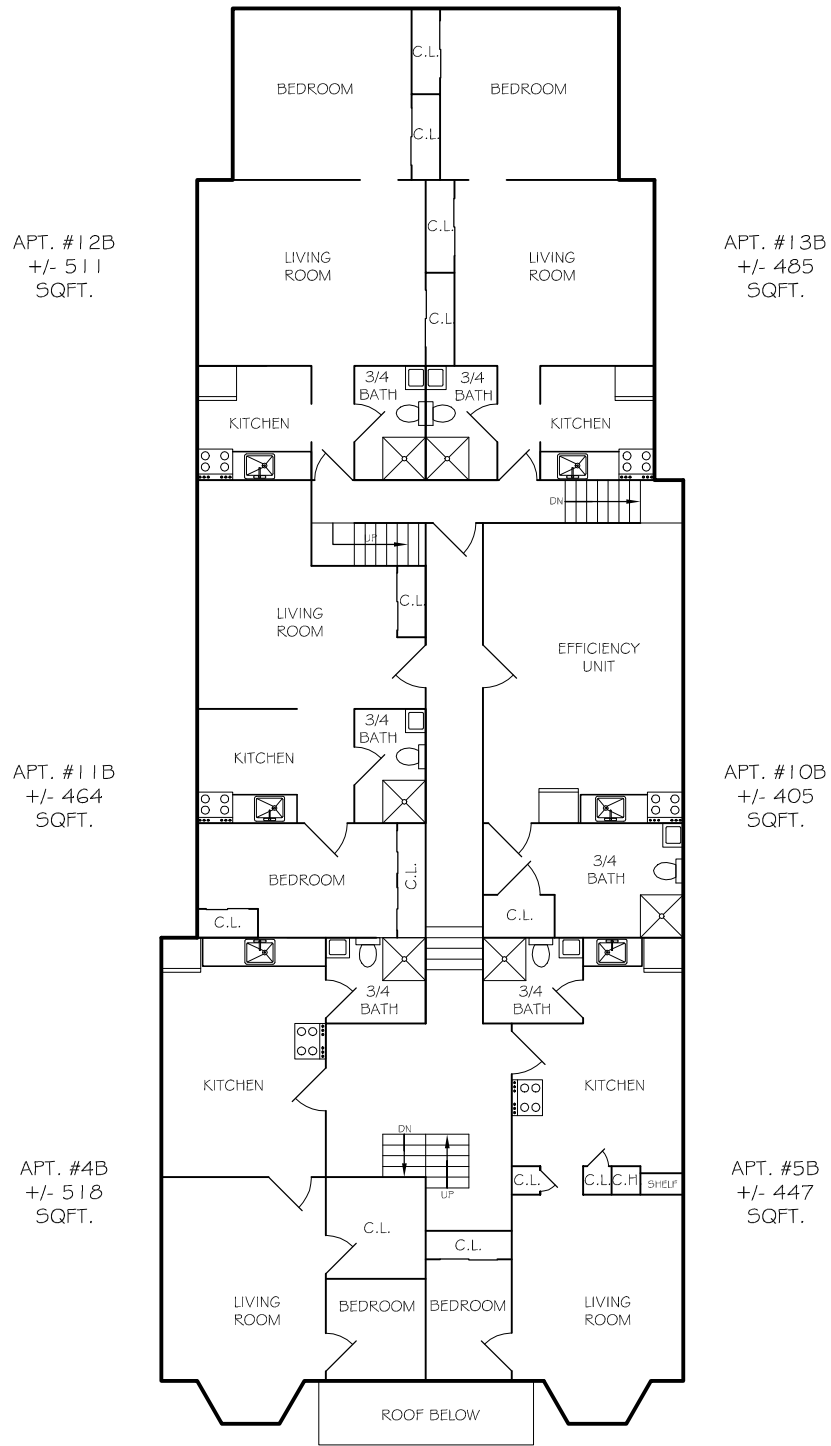


COLLEGE APARTMENTS



APT. #12B
+/- 511
SQFT.

APT. #13B
+/- 485
SQFT.

APT. #11B
+/- 464
SQFT.

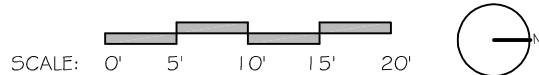
APT. #10B
+/- 405
SQFT.

APT. #4B
+/- 518
SQFT.

APT. #5B
+/- 447
SQFT.

SECOND FLOOR

166 HIGH STREET



THE INFORMATION GIVEN MAY VARY FROM ACTUAL BUILDING DIMENSIONS AND SQUARE FOOTAGE. A GOOD FAITH EFFORT HAS BEEN MADE TO BE AS ACCURATE AS POSSIBLE